

Model MB



MB-B



MB-BV



MB-F2



MB-K



MB-T3



MB-FX

Dial gauge is not included



MB-RV



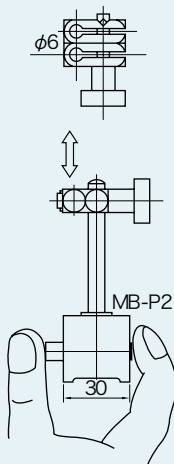
MB-W2V



MB-W2S



MB-P2



Upper Fixture Model DG-8

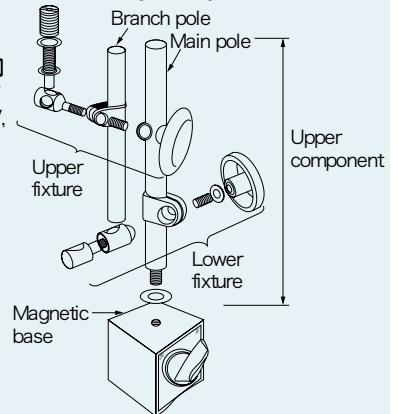
(Fixture for Mounting Dial Gauge)

- Upper fixture clamp with mounting hole size of $\phi 6.5/8.1$ mm, supplied optionally for MB-B, BV, F2, K (if $\phi 8$ mm mounting hole is required).

Model DG-8-B (MB-B, BV, F2)

Model DG-8-K (MB-K)

(Names of major components of MB-B)



Magnetic Base Model MB

[Application]

As an auxiliary tool for general measurements, these bases can increase precision and improve working efficiency.

A wide variety of models are available, from mini size to large sizes, including deluxe types to meet every specific need.

[Features]

- The magnetic base can hold a measuring device, such as dial gauge, for general measurements or diverse measurements, as in machining workshops.
- With a powerful magnetic force, it can be held on vertical faces, upside-down, or by round bar.



[mm (in.)]

Model	Holding Power	Magnetic Base			Main Pole		Sub Pole		Screw Threads			Clamphole Dia	Mass	Features
		Width	Length	Height	Dia φ	Length	Dia φ	Length	Mag. Base	Step	Main Pole			
MB-B	800N (80kgf)	58 (2.28)	73 (2.87)	55 (2.16)	12 (0.47)	176 (6.92)	10 (0.39)	165 (6.49)	M8 (0.31) × 1.25 (0.04)	-	M8 (0.31) × 1.25 (0.04)	4.5 (0.17), 6.5 (0.25)	1.9kg/3.3 lb	General, standard type.
MB-BV					14 (0.55)	178 (7.00)	12 (0.47)	165 (6.49)					1.8kg/3.5 lb	General type with fine movement adjustment.
MB-F2					16 (0.62)	225 (8.85)	14 (0.55)	165 (6.49)					1.7kg/3.7 lb	Main pole 360° turning can be locked at 75° maximum.
MB-K					20 (0.78)	178 (7.00)	14 (0.55)	165 (6.49)					1.8kg/4.0 lb	Main pole large diameter, suitable for precision measurement.
MB-RV	1000N (100kgf)	50 (1.96)	73 (2.87)	55 (2.16)	16 (0.62)	225 (8.85)	14 (0.55)	165 (6.49)	M20 (0.78) × 1.5 (0.05)	M20 (0.78)/M10 (0.39)	M10 (0.39) × 1.25 (0.04)	6.5 (0.25), 8.1 (0.31)	2.0kg/4.4 lb	Larger size with fine movement adjustment.
MB-W2V	117 (4.60)	178 (7.00)	14 (0.55)	200 (7.87)	2.7kg/6.0 lb	High-precision type with fine movement adjustment.								
MB-T3	1300N (130kgf)	58 (2.28)	117 (4.60)	55 (2.16)	16 (0.62)	315 (12.4)	-	-	M20 (0.78) × 1.5 (0.05)	M20 (0.78)/M10 (0.39)	M10 (0.39) × 1.25 (0.04)	6.0 (0.23), 8.1 (0.31)	4.1kg/9.1 lb	Main pole longest, base largest and holding power greatest.
MB-FX	800N (80kgf)	58 (2.28)	58 (2.28)	55 (2.16)	16 (0.62)	315 (12.4)	-	-	M8 (0.31) × 1.25 (0.04)	-	M8 (0.31) × 1.25 (0.04)	6.0 (0.23), 8.1 (0.31)	1.9kg/3.3 lb	Flexible type settable bent freely.
MB-W2S	1000N (100kgf)	73 (2.87)	73 (2.87)	55 (2.16)	20 (0.78)	178 (7.00)	12 (0.47)	165 (6.49)	M8 (0.31) × 1.25 (0.04)	-	M8 (0.31) × 1.25 (0.04)	4.5 (0.17), 6.5 (0.25)	3.0kg/6.6 lb	Two-step pole with fine movement adjustment.
MB-P2	170N (17kgf)	30 (1.18)	30 (1.18)	30 (1.18)	7 (0.27)	54 (2.12)	-	-				M5 (0.19) × 0.8 (0.03)	M5 (0.19) × 0.8 (0.03)	6.0 (0.23)

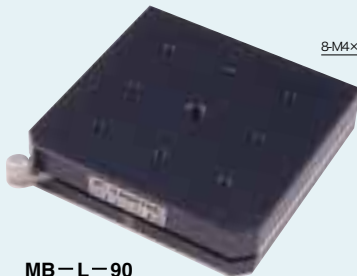
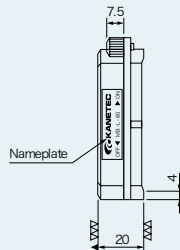
※ Upper fixture, DC-8形 (attaching hole of φ6.5/8.1), for attaching dial gauge is optionally supplied.

※ Attraction shows the value for plate, SS400, 10mm plate thickness, ground-finished face.

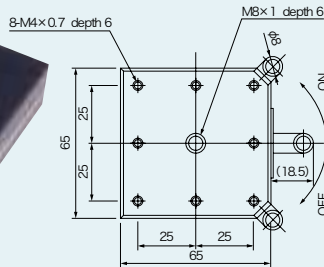
Model MB-L



MB-L-45



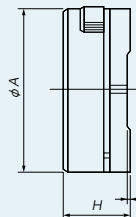
MB-L-90



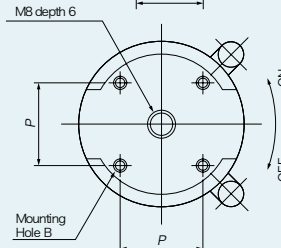
Model MB-L-C



MB-L-C50



MB-L-C75



Magnetic Holder Model MB-L

[Application]

An ideal accessory for optical tables and breadboards.

Reduces experimental set-up time by allowing free positioning and instant clamp down of optical components.

Switchable ON/OFF magnetic circuit permits fine adjustment and precise positioning.

[Features]

- Easy ON-OFF operation using the lever.
- Thin and powerful magnetic force.
- Generous array of tap holes.

[mm (in.)]

Model	Holding Power	Dimension			Mounting Hole	Mass
		Width	Length	Height		
MB-L-45	65N (6.5kgf)	45 (1.77)	45 (1.77)	20 (0.78)	4-M4 (0.15) Depth 6 (0.23) (Span 25 (0.98))	0.3kg/0.6 lb
MB-L-65	200N (20kgf)	65 (2.55)	65 (2.55)	20 (0.78)	8-M4 (0.15) Depth 6 (0.23) (Span 25 (0.98))	0.6kg/1.3 lb
MB-L-90	250N (25kgf)	90 (3.54)	90 (3.54)	20 (0.78)	8-M4 (0.15) Depth 6 (0.23) (Span 25 (0.98))	1.2kg/2.6 lb

※ The holding power applies to SS400, thickness 25 mm and ground surface.

Magnetic Holder Model MB-L-C Series

[Application]

Same excellent features of our MB-L series, with a circular base.

[Features]

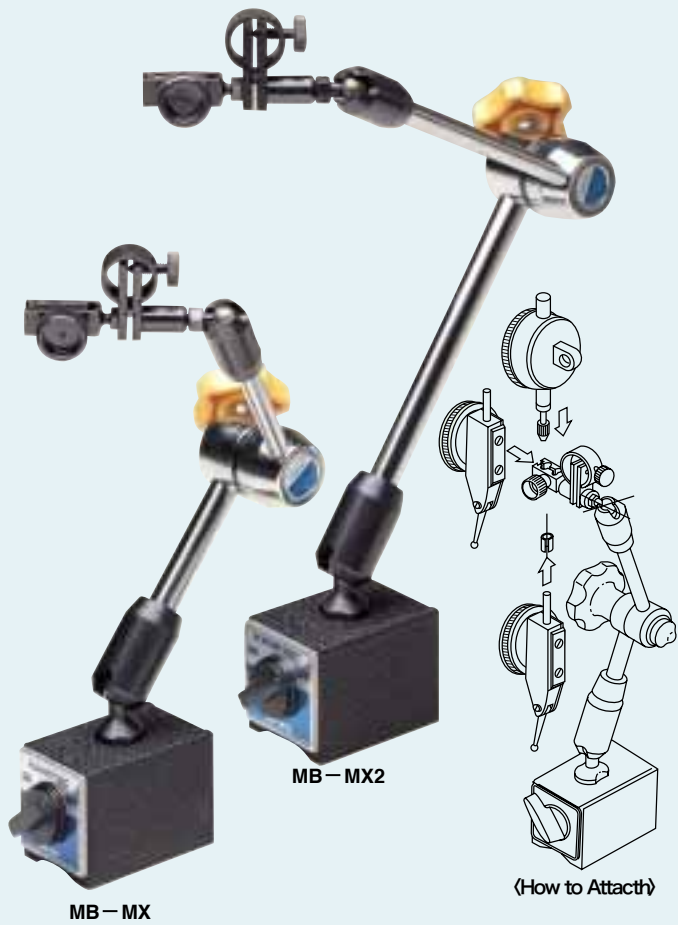
- Array of tap holes.

[mm (in.)]

Model	Holding Power	Dimension		Mounting Hole		Mass
		A	H	P	B	
MB-L-C50	59N (6kgf)	50 (1.96)	20 (0.78)	25 (0.98)	M4 (0.15) Depth 6 (0.23)	0.30kg/0.6 lb
MB-L-C75	196N (20kgf)	75 (2.95)	20 (0.78)	35 (1.37)	M4 (0.15) Depth 6 (0.23)	0.68kg/1.5 lb

※ The holding power applies to SS400, thickness 25 mm and ground surface.

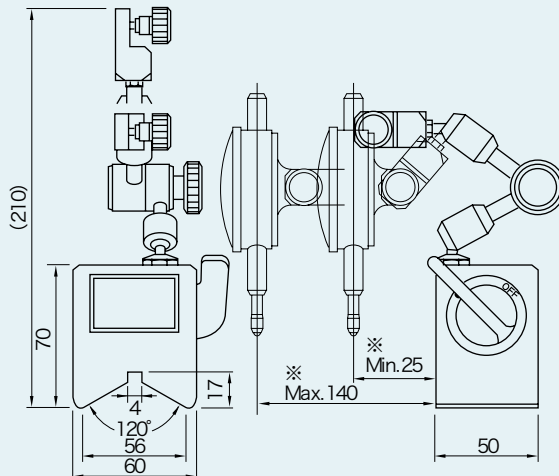
Model MB-X



Model MB-S



The dimensions marked by ※ depend on the installation of dial gauges specified in JIS B7503.



High Lock Base Model MB-MX

[Features]

- Mechanical clamping type tightens three joints simultaneously just by one-touch operation.
- Arm is freely adjustable without distortion.
- Equipped with fine adjuster and medium size magnet for stabilizing the base. Suitable for performing precision operation.

High Lock Base Model MB-OX

[Features]

- Hydraulic type tightens three joints simultaneously just by one-touch operation.
- Arm is freely adjustable without distortion.
- Equipped with fine adjuster and medium size magnet for stabilizing the base. Suitable for performing precision operation.

[mm (in)]

Model	Lock Mechanism	Holding Power	Magnetic Base			Arm			Tapped Hole	Indicator Clamp		Mass	Features
			Width	Length	Height	L ₁	L ₂	L ₃		Stem Hole	Dovetail		
MB-MX	Mechanical Type	1000N (100kgf)	50 (1.96)	73 (2.87)	55 (2.16)	146 (5.74)	106 (4.17)	81 (3.18)	M8 (0.31) × 1.25 (0.04)	φ8 (0.31)	6.5 (0.25)	2.0kg/4.4 lb	Standard Type
MB-MX2						226 (8.89)	186 (7.32)					2.2kg/4.8 lb	Long Support Type
MB-OX	Hydraulic Type					140 (5.51)	110 (4.33)			φ6 (0.23)		2.0kg/4.4 lb	Standard Type
MB-CX	Mechanical Type	160N (16kgf)	28 (1.10)	28 (1.10)	29 (1.14)	46 (1.81)	46 (1.81)	39 (1.53)	M5 (0.19) × 0.8 (0.03)	φ6 (0.23) × 2		0.38kg/0.8 lb	V Cutting Face Type
MB-P2X		170N (17kgf)	30 (1.18)	30 (1.18)	30 (1.18)	46 (1.81)	46 (1.81)	39 (1.53)	M5 (0.19) × 0.8 (0.03)			0.38kg/0.8 lb	Lail Face Type

※ The holding power applies to SS400, thickness 10 mm and ground surface.

Unlocking Sequence

MB-MX: When the tightening knob is loosened, it is unlocked from the top to the bottom.

1.Top



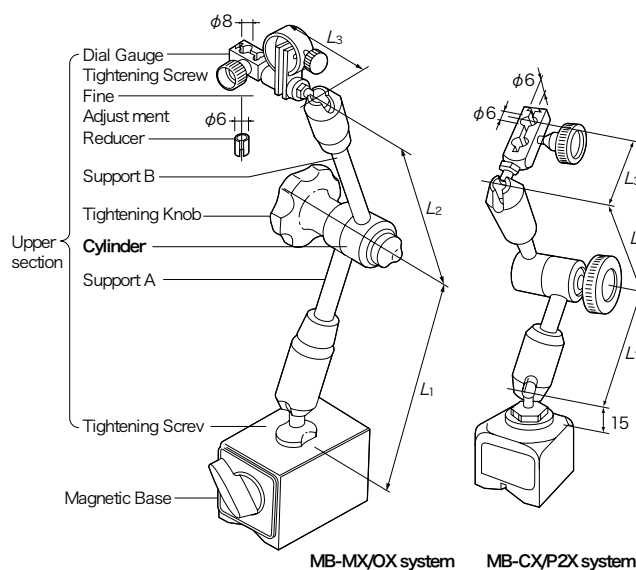
2.Middle



3.Bottom



<Component names/Dimensions>



Borer Base Model MB-S

[Application]

Useful for positioning the projected size of cutter attached to the arbor of boring machine (by measuring the size with dial gauge).

[Features]

- Easily loaded/unloaded due to its magnetism changeover switch.
- Dial gauge attaching screw: M6

[mm (in)]

Model	Holding Power	Arbor Diameter	Holding area Dimension		Mass
			Width	Angle	
MB-S12B	250N (25kgf) at φ70 (2.75)	φ15 (0.59) ~ 120 (4.72)	92 (3.62)	90°	1.3kg/2.8 lb

Model ME



Silicon Cap



ME-5RA



ME-2CA



ME-F1C



ME-L2C

No bulb is included except for ME-5RA.

Magnetic Lamp Stand Model ME

[Application]

Most suitable for lighting at assembly and repair jobs.

[Features]

- Beam angle is freely adjustable and you can attach it firmly anywhere with its powerful magnetism.
- The magnetic base is made with a V-slot and attracts any steel face, whether it is plane or curved.
- You can use bulbs up to 100V-100W.

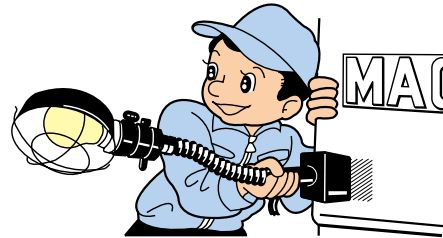
Magnetic Lamp Stand Model ME-F1C

[Application]

Fluorescent lamp magnetic stand that provides soft light rays without heating. This new model is capable of focussing light upon the desired area, and requires a very small space.

[Features]

- The magnetic base is larger and is more powerful than model ME-2CA.
- A deep lamp-shade with intentionally narrowed aperture effectively focuses rays upon the target spot.



Magnetic Lamp Stand Model ME-L2C

[Application]

The magnetic base can easily light up a spot hard to illuminate.

The gooseneck is approx. 1.7 times longer than the standard type (ME-2CA).

							[mm(in.)]
Model	Type	Holding Power	Height	Cord Length	Bulb Capacity		Mass
ME-2CA	Standard	800N (80kgf)	435 (17.1)	1.6m (62.9)	AC100V	Upper limit 100W	1.3kg/2.8 lb
ME-L2C	Long Flexible Pipe	1000N (100kgf)	745 (29.3)	2.0m (78.7)		Recommended 60W	1.7kg/3.7 lb
ME-5RA	Swivel		240 (9.44)	5.0m (196.8)	AC100V	200W	1.3kg/2.8 lb
ME-F1C	Fluorescent Lamp	435 (17.1)	1.6m (62.9)	AC100V	Upper limit 100W	2.0kg/4.4 lb	

※No bulb is included. Use a bulb having the base E26.

※Bulb, 100V, 200W, is supplied for ME-5RA.

※The holding power applies to SS400, thickness 10 mm and ground surface.

※No problem in terms of rating will occur for long-hour use with a 100 W incandescent lamp, but be careful not to get burnt during handling.

Model MR



MR-2C

Magnetic Lens Stand Model MR

[Application]

Very useful for accurate readings of the smallest graduations on measuring instruments.

[Features]

- The large diameter lens protects your eye from fatigue and is easy to read.
- Angle of maglens is freely adjustable with its flexible neck; and the lens is also turnable.

[mm(in.)]

Model	Holding Power	Flexible tube Height	Lens Dia	Focus Distance	Magnification	Mass
MR-2C	800N (80kgf)	257 (10.1)	φ100 (3.93)	250 (9.84)	×2	1.5kg/3.3 lb

※ The holding power applies to SS400, thickness 10 mm and ground surface.

Model MB-P



Magnetic Holder Base Model MB-P

[Application]

Available in a wide range of sizes from minimum and medium to large. These on-off switchable magnetic holder bases meet various application. Usable as a tacking base for equipment, and/or a measuring base for laser use (by installing jigs in the screw holes or, if necessary, with slight additional machining).

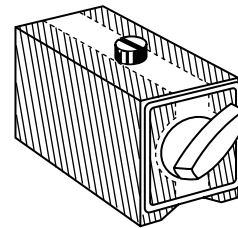
[Features]

- Compact in size, yet it delivers a strong magnetic force.
- Either a V-slit and/or flat attractive surface is provided. The face opposite to the changeover switch face is also attractive.
- Although screw holes are provided, additional machining is possible; to widen the range of uses as a tacking base or temporary 34 installation leg.

[mm (in.)]

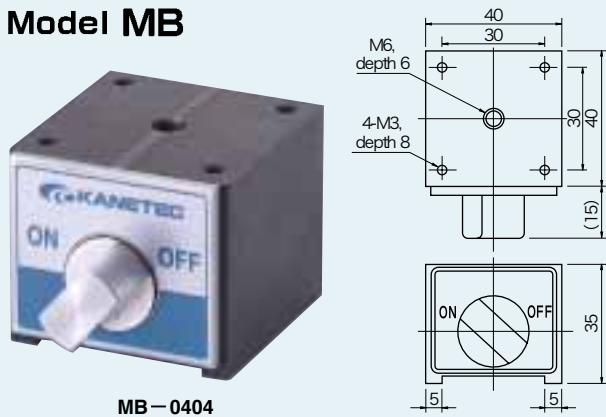
Model	Holding Power	Dimension			Tapped Hole	Hold face Form	Mass
		Width	Length	Height			
MB-PB	800N (80kgf)	58 (2.28)	55 (2.16)		M 8 (0.31) × 1.25 (0.04) Depth 7 (0.27)		1.0kg/2.2 lb
MB-PR	1000N (100kgf)	73 (2.87)	73 (2.87)				1.3kg/2.8 lb
MB-PRW	600N (60kgf)	55 (2.16)	73 (2.87)		M10 (0.39) × 1.25 (0.04) Depth 7 (0.27)		1.2kg/2.6 lb
MB-PL	1300N (130kgf)	117 (4.60)	55 (2.16)				2.0kg/4.4 lb
MB-PH	1250N (125kgf)	70 (2.75)	70 (2.75)	80 (3.14)	M12 (0.47) × 1.75 (0.06) Depth 11 (0.43)		2.5kg/5.5 lb
MB-PG	1500N (150kgf)	60 (2.36)	120 (4.72)	52 (2.04)	M 8 (0.31) × 1.25 (0.04) Depth 7 (0.27)		0.18kg/0.4 lb
MB-PP2	170N (17kgf)	30 (1.18)	30 (1.18)	30 (1.18)	M 5 (0.19) × 0.8 (0.03) Depth 5 (0.19)		

※ The holding power applies to SS400, thickness 10 mm and ground surface.
 ※ MB-PRW is constructed for water-proof.



■ Workable area on the magnet holder base
 Some machining such as drilling is allowed in the shaded areas.

Model MB



Magnetic Base Model MB

[Application]

This base can be used widely as a magnetic force ON/OFF type magnet base. It is designed small and is useful as a base for temporarily mounted legs of equipment, sensors and lasers by mounting a jig using tapped holes or by some additional machining.

[Features]

- The base can be mounted and demounted easily using the select lever.
- Compact but powerful magnetic force.
- Waterproof and oilproof construction.

[mm (in.)]

Model	Holding Power	Dimension			Mounting Hole	Mass
		Width	Height	Length		
MB-0404	200N (20kgf) or over	40 (1.57)	35 (1.37)	40 (1.57)	4-M3 (0.11) Depth (Span 30 (1.18))	0.4kg/0.8 lb

※ The holding power applies to SS400, thickness 10 mm and ground surface.

Model KM-B



Magnetic Ruler Holder Model KM-B

[Application]

Useful for holding a large ruler on floor or wall, etc., at the working site in ship building yard, and also for carriage.

[Features]

- Attachable and detachable easily by changeover lever.
- Attractive face is made in V-slit for KM-B1 and in inverted concave for KM-B2.

[mm (in.)]

Model	Holding Power	Base Dimension			Tapped Hole	Mass
		Width	Length	Height		
KM-B1	800N (80kgf)	50 (1.96)	58 (2.28)	55 (2.16)	M 8 (0.31) × 1.25 (0.04) Depth 7 (0.27)	1.1kg/2.4 lb
KM-B2	1500N (150kgf)	60 (2.36)	120 (4.72)	52 (2.04)		2.8kg/6.2 lb

※ The holding power applies to SS400, thickness 10 mm and ground surface.